

## TEMPLATE KEY:

Art files should be submitted in CMYK with optional PMS colors.

Look on the **"Layers"** Panel to build your brochure correctly:

### ■ Template/Dieline (build and orientation of brochure)

Includes cuts and score area. Outer edges and screen will be cut, inner will be scored.

### ■ Bleed (extra artwork overlay for cutting to edge)

3.175mm / .125in bleed required around all edges with ink.

### ■ Type Safety (build within space of boxes)

3.175mm / .125in to 6.35mm / .25in recommended type-safety area to insure content does not get damaged.

### ■ No Ink (found on the template/dieline layer)

No artwork in this area.

**Artwork** (for designer to place client artwork)

**Spot UV** (optional vector overlay layer)

**Foil** (optional vector overlay layer)

**Emboss** (optional vector overlay layer)

**Deboss** (optional vector overlay layer)

## FINAL FILES:

### File / Package

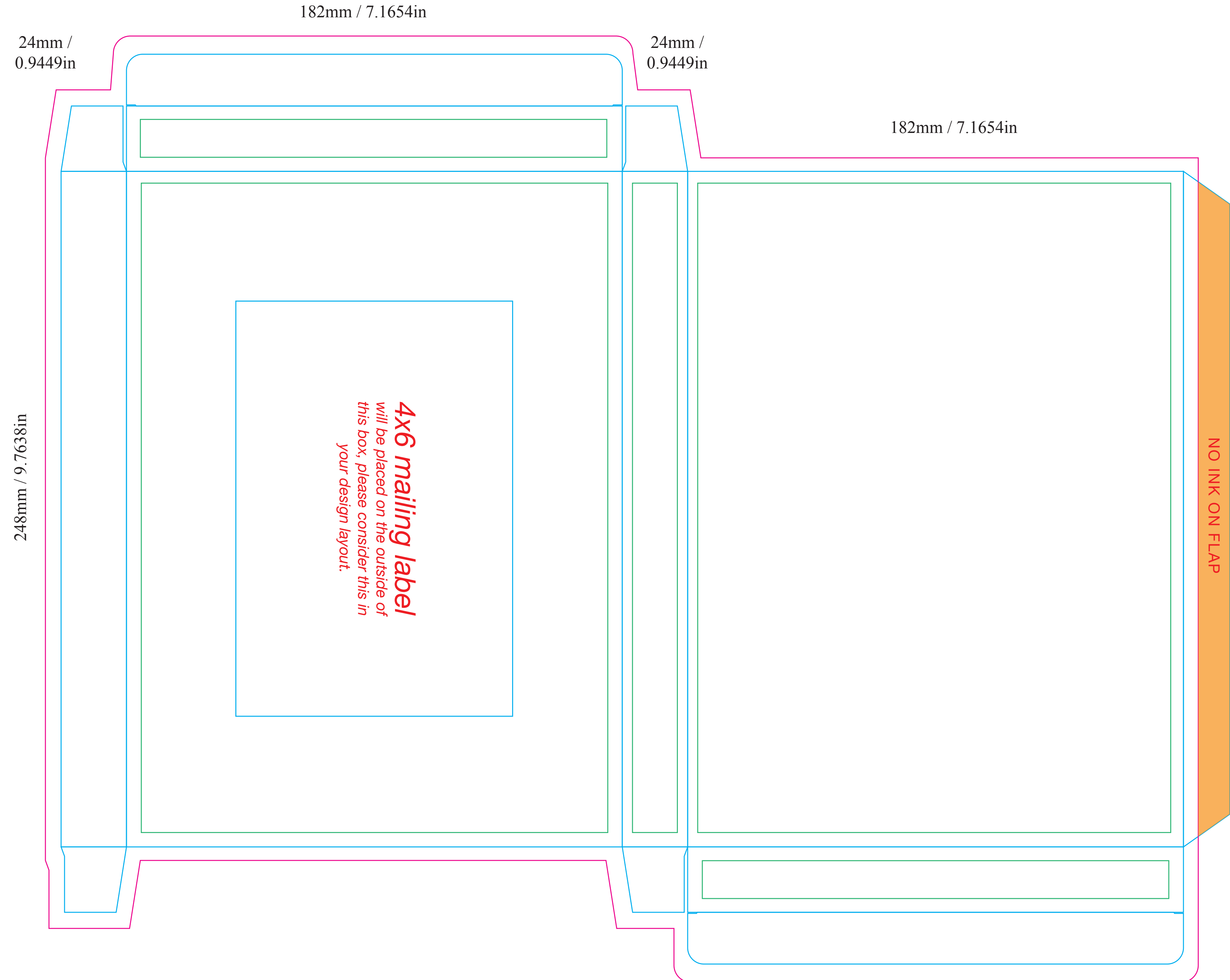
1) The packaged file should include fonts and any placed imagery/links even if you embed them into the file.

2) Include Press-Quality PDFs, *toggle through the layers and export each layer used as it's own pdf.*

3) Zip/Compress package file and submit for printing.

## i ABOUT THIS TEMPLATE: Finished Size: 9.8in x 7.2in

### Mailer Box Template



### USB Cord Box Template

