

TEMPLATE KEY:

Art files should be submitted in CMYK with optional PMS colors.

Look on the **"Layers"** Panel to build your brochure correctly:

- Template/Dieline (build and orientation of brochure)**
Includes cuts and score area. Outer edges and screen will be cut, inner will be scored.
- Bleed (extra artwork overlay for cutting to edge)**
3.175mm / .125in bleed required around all edges with ink.
- Type Safety (build within space of boxes)**
3.175mm / .125in to 6.35mm / .25in recommended type-safety area to insure content does not get damaged.
- No Ink (found on the template/dieline layer)**
No artwork in this area.

Artwork (for designer to place client artwork)

Spot UV (optional vector overlay layer)

Foil (optional vector overlay layer)

Emboss (optional vector overlay layer)

Deboss (optional vector overlay layer)

Speaker Audio Holes:
The client can choose the orientation/ arrangement of the speaker audio holes and how many holes they would like. *****please place/design your speaker audio holes on the artwork layer.*****

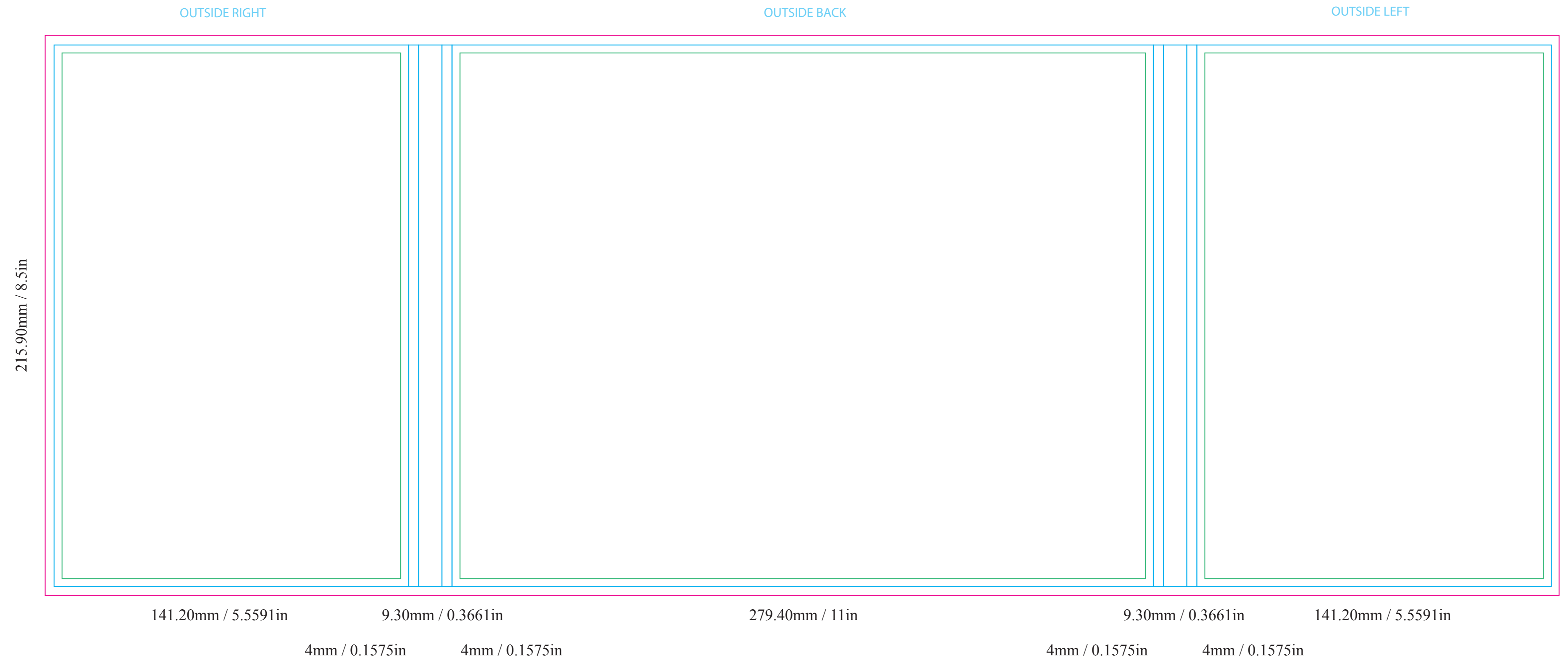
Video Experience Player Buttons:
The client can choose which buttons to include on the video brochure to allow for the best user experience of the video. You can design, size and color them to fit the design of your brochure. *****please place/design your buttons on the artwork layer.*****

Placement for both the speaker audio holes and the video experience player buttons must be at least 18mm / 0.7087in away from edges, each other, and the screen.

FINAL FILES:

File / Package

- 1) The packaged file should include fonts and any placed imagery/links even if you embed them into the file.
- 2) Include Press-Quality PDFs, toggle through the layers and export each layer used as it's own pdf.
- 3) Zip/Compress package file and submit for printing.



i ABOUT THIS TEMPLATE: Screen Size: 7in | Brochure Size: 11in x 8.4in | Orientation: Landscape

