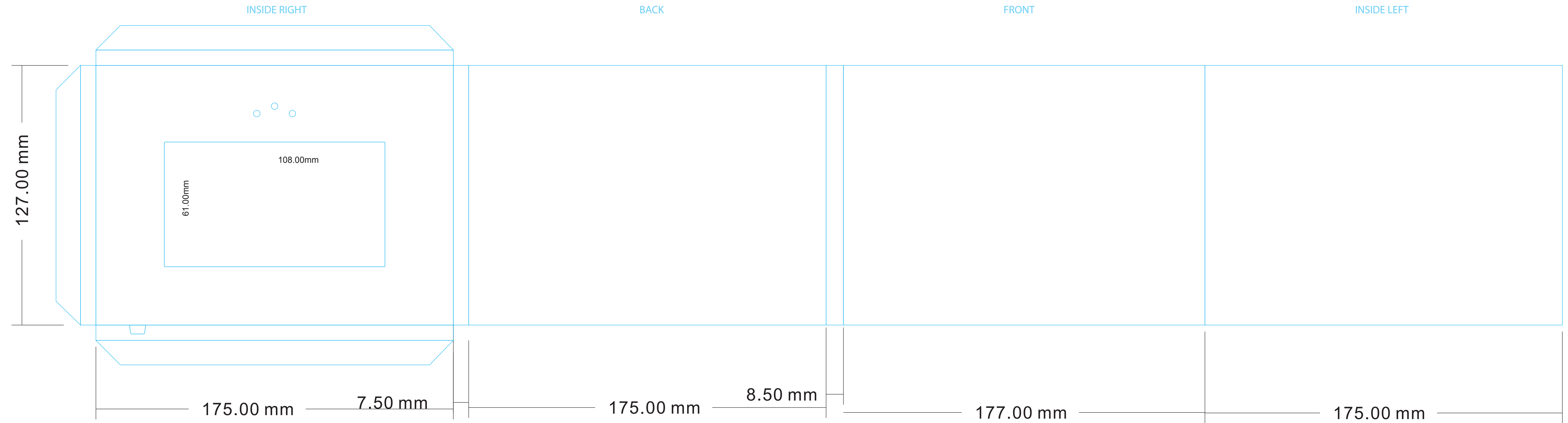



5inch_5x6.8_LANDSCAPE



DESIGNING YOUR VIDEO BROCHURE:

- Button quantity and placement is **only** a suggestion, you can move them around. Placement must be at least 18mm away from edges, each other and the screen.
- Speaker placement is also **variable** (18mm distance) and knockout holes are optional.
- Art files should be submitted CMYK with optional PMS, foil or UV spot called out. File format should be **Illustrator** or PDF. A vector diagram is helpful but not required.

Trim line 

Bleed Line 