



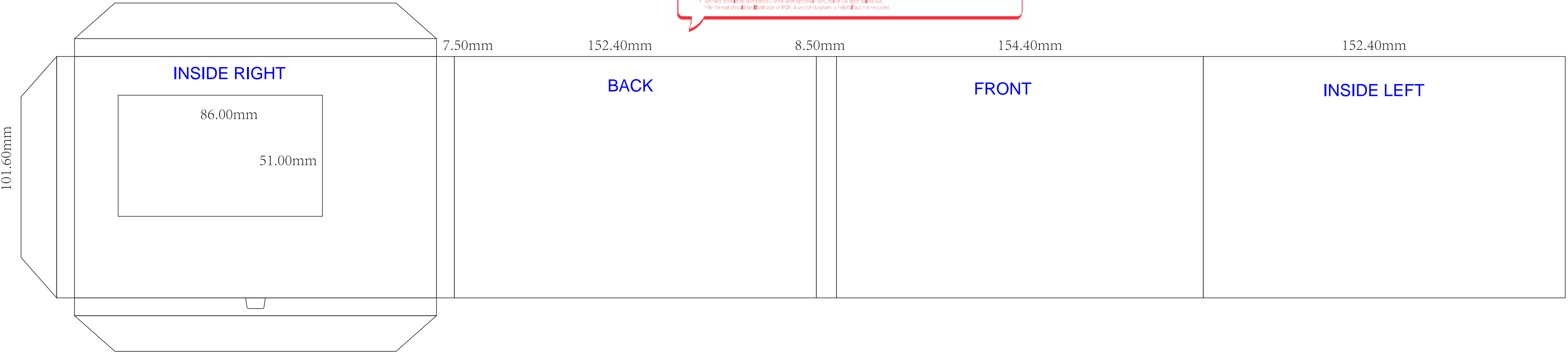
# 4" HD \_ 4X6\_ LANDSCAPE

**DESIGNING YOUR VIDEO BROCHURE:**

- Button quantity and placement is **only** a suggestion, you can move them around. Placement must be at least 18mm away from edges, each other and the screen.
- Speaker placement is also variable (18mm distance) and knockout holes are optional.
- Art files should be submitted CMYK with optional PMS, foil or UV spot called out. File format should be **Illustrator** or PDF. A vector diagram is helpful but not required.

Trim line 

Bleed Line 



152.40mm

7.50mm

152.40mm

8.50mm

154.40mm

152.40mm

101.60mm

**INSIDE RIGHT**

86.00mm

51.00mm

**BACK**

**FRONT**

**INSIDE LEFT**