

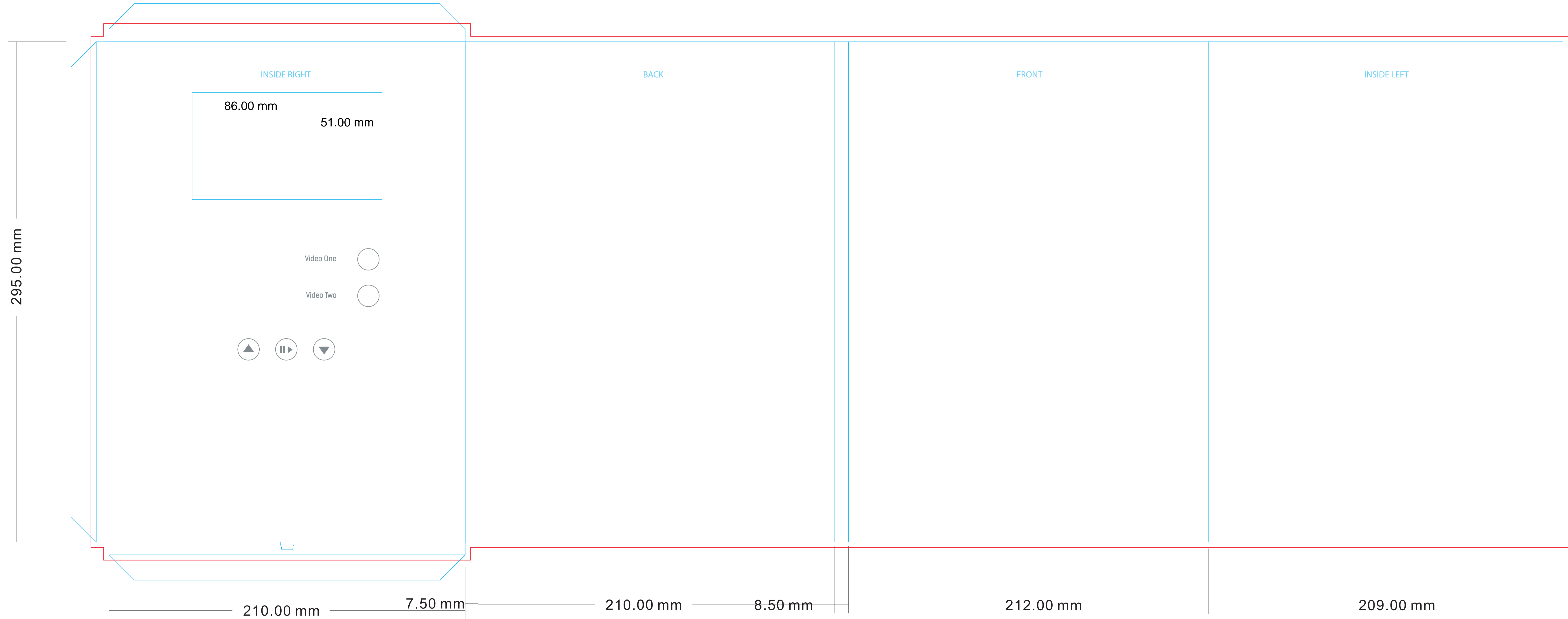


4 inch A4_11.6 X 8.2_PORTRTRAIT

DESIGNING YOUR VIDEO BROCHURE:

- Button quantity and placement is only a suggestion, you can move them around. Placement must be at least 18mm away from edges, each other and the screen.
- Speaker placement is also variable (18mm distance) and knockout holes are optional.
- Art files should be submitted CMYK with optional PMS, foil or UV spot called out. File format should be Illustrator or PDF. A vector diagram is helpful but not required.

Trim line 
Bleed Line 



7 inch A4 portrait